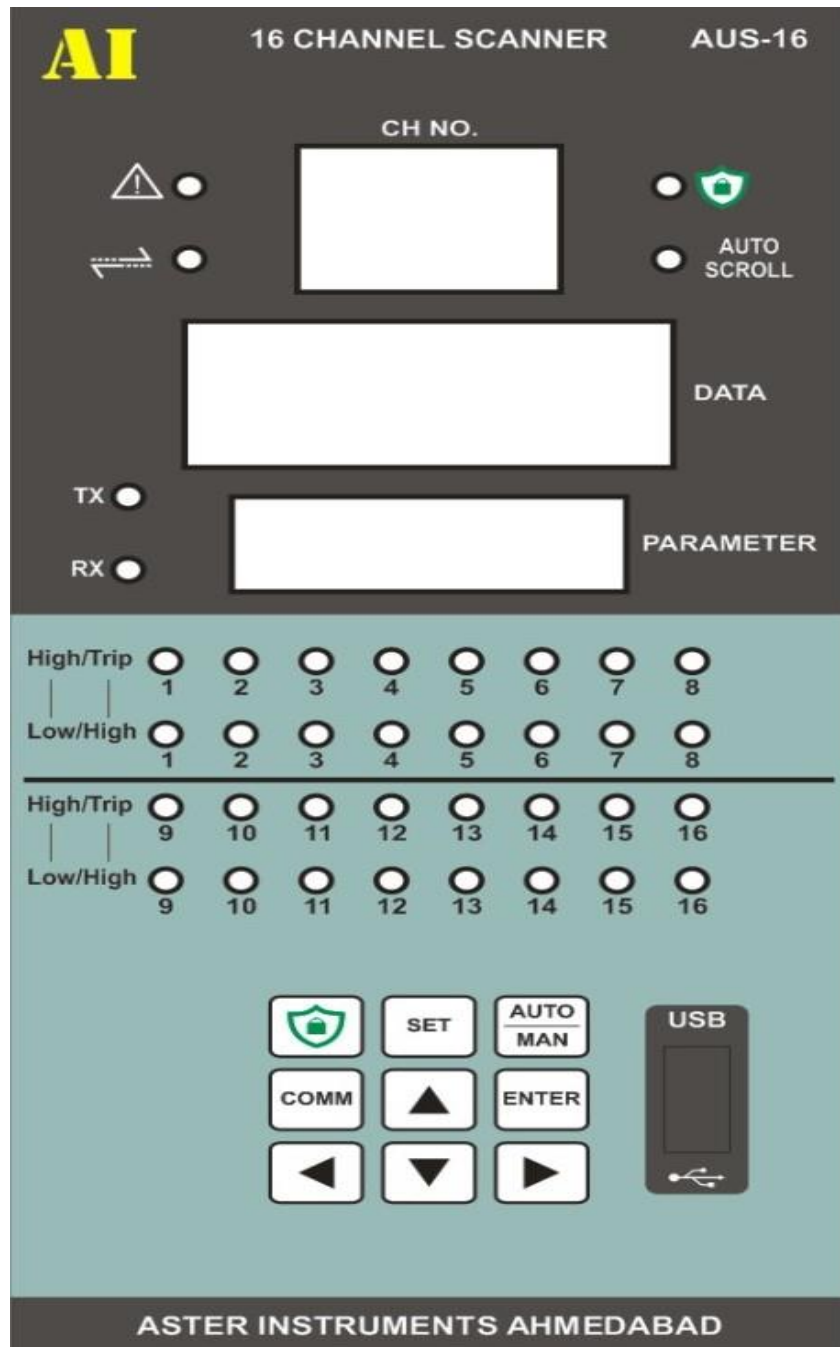
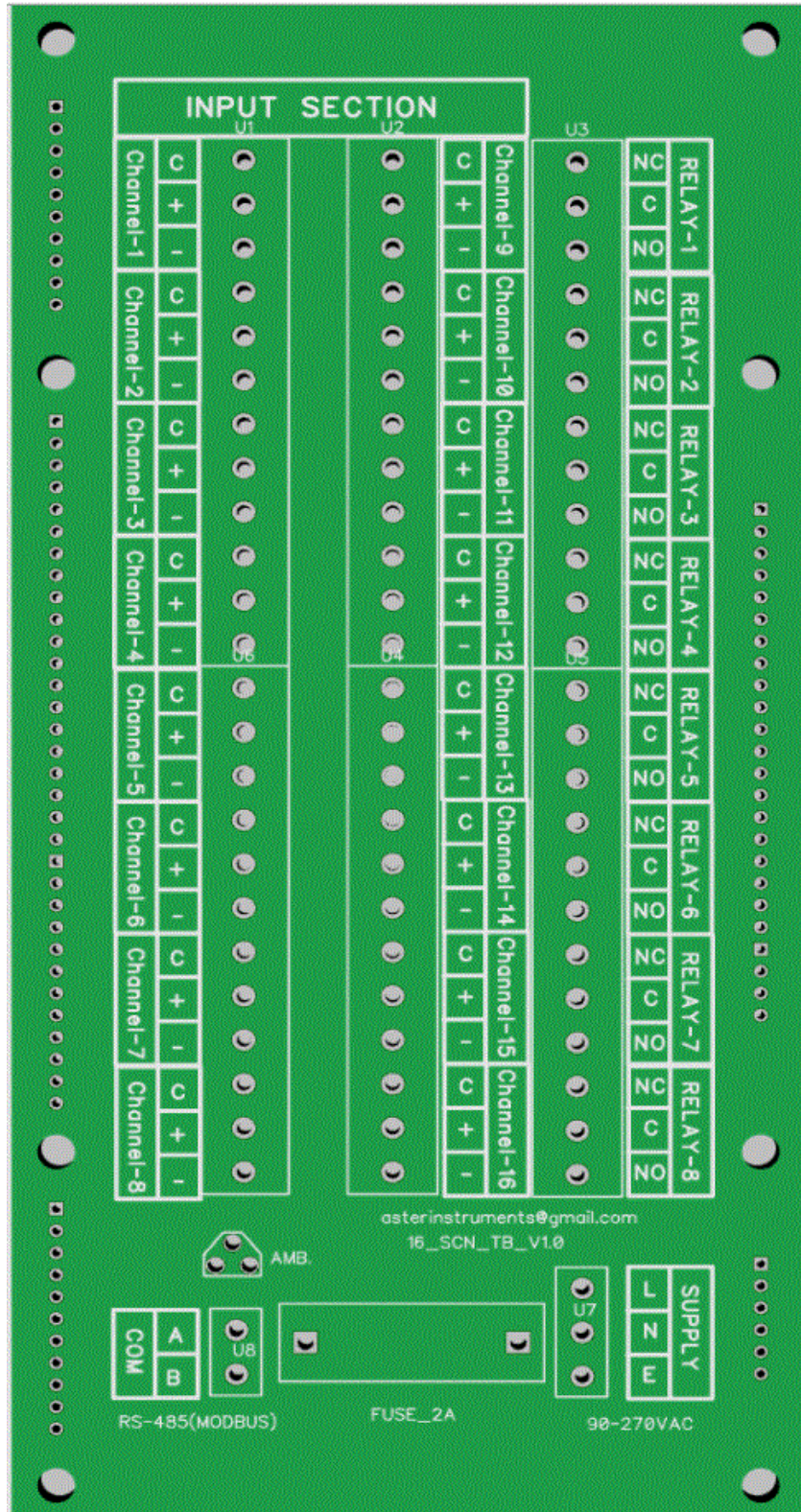


Front Side

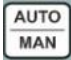





# Back Side



|           |                                    |
|-----------|------------------------------------|
| CH No.    | Channel No                         |
| DATA      | Present Channel Value              |
| PARAMETER | Selected input for Current Channel |

**Note:-**

- 1) Press  for Continuous Scrolling or Manual Scrolling. When Manual Mode will on than Auto scroll led will be off.
  - 2) In Manual Mode use  or  Key for select next or previous channel respectively.
  - 3) Press  Key for Exit From any Menu without saving parameter.
  - 4) For RTD input connect both Red wire on “ C “ and “ + “ Terminal & white Wire on “ – “ Terminal.
  - 5) For 4-20 mA input , use 100 ohm (0.1 %) Resistor across “+” and “--“ Terminal.
  - 6) For 0-10 V and Thermocouple Input, use “+” and “—” Terminal.
- 4) Operating Power Supply voltage is 85-265 VAC , 50 Hz.

## Basic Configuration Setting

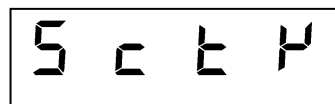
Press  +  Key for 3 second.






For the change Scan Time, Press  or  Key

Scan time ( 3 to 255 Second)



Press  Key for next parameter







Slave Id for Modbus Communication ( 1 to 255)

Press  Key for Save & Exit

# Offset Setting


Press  +  Key for 3 second.

0 1

0 0 0 0

0 F 5 t

For the change offset value, Press  or  Key

Press  Key for next parameter

1 6

0 0 0 0

0 F 5 t

(Repeat the same Procedure for all 16 Channel)

Press  Key for Save & Exit

## Channel Skip - Unskip Setting

Press  +  Key for 3 second.

0 1

NO

For the change parameter, Press  or  Key

SKIP

(NO – UNSKIP / YES - SKIP)

.

Press  Key for next parameter

1 6

NO

(Repeat the same Procedure for all 16 Channel)

SKIP

Press  Key for Save & Exit